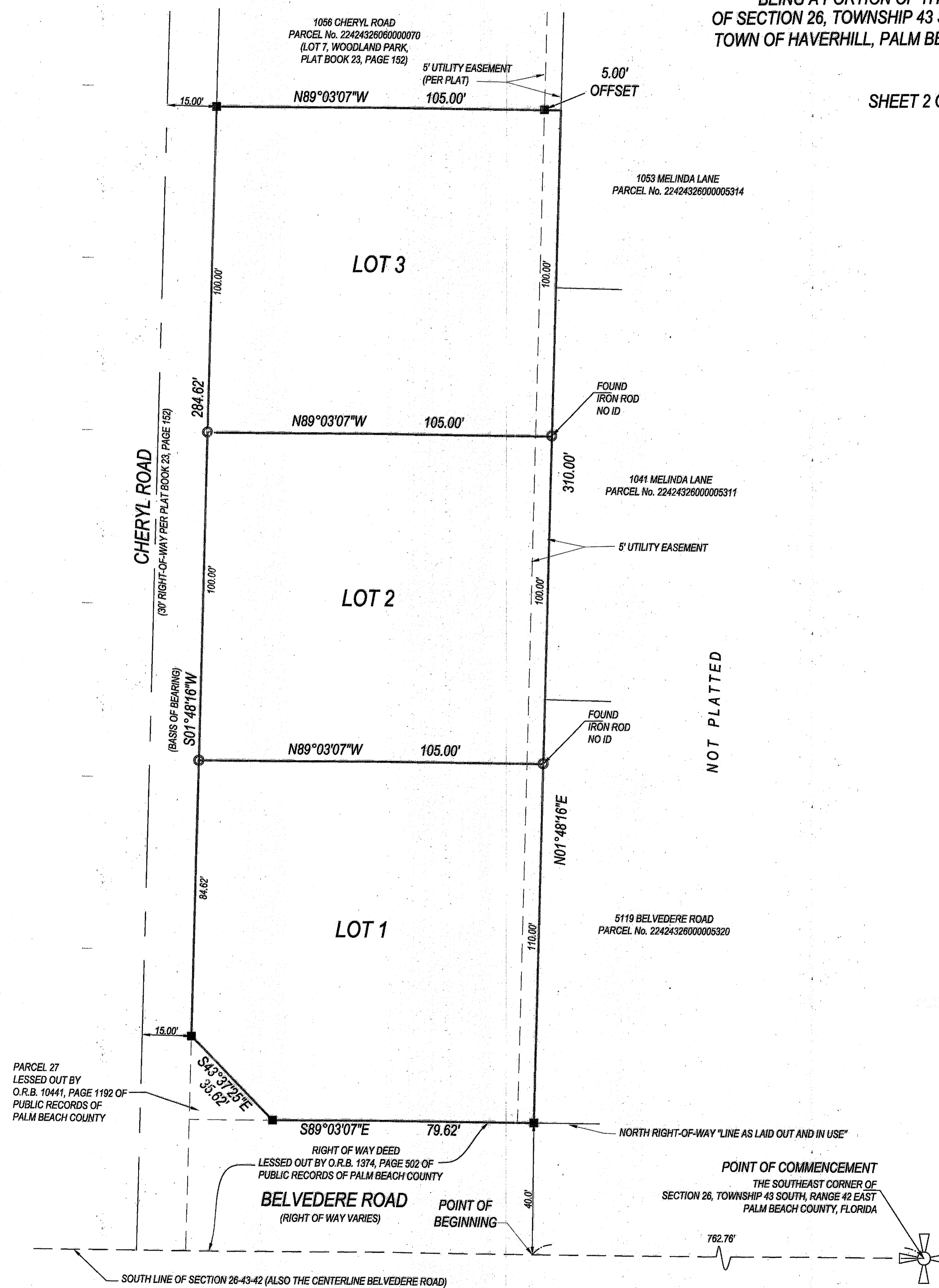
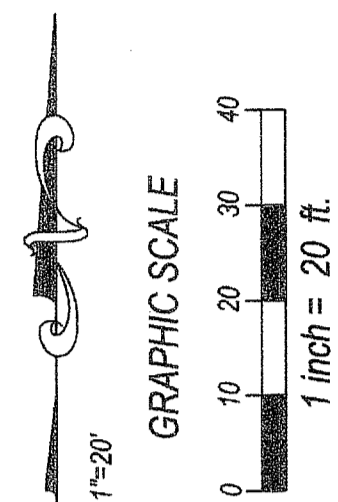


# SOLANA

BEING A PORTION OF THE SOUTHEAST 1/4  
OF SECTION 26, TOWNSHIP 43 SOUTH, RANGE 42 EAST,  
TOWN OF HAVERHILL, PALM BEACH COUNTY, FLORIDA.

SHEET 2 OF 2



STATE OF FLORIDA **32**  
COUNTY OF PALM BEACH  
THIS PLAT HAS BEEN FILED FOR  
RECORD AT \_\_\_\_\_  
THIS \_\_\_\_\_ DAY OF \_\_\_\_\_, 201\_\_\_\_  
AND DULY RECORDED IN PLAT  
BOOK \_\_\_\_\_  
ON PAGE \_\_\_\_\_  
SHARON R. BOCK  
CLERK & COMPTROLLER  
PALM BEACH COUNTY  
BY: \_\_\_\_\_

- LEGEND
- SET 4"x 4" CONCRETE MONUMENT AND BRASS DISK "LB 6788"
  - SET 1/2" IRON ROD AND CAP "LB 6788"
  - FOUND 4"x 4" CONCRETE MONUMENT (PERMANENT REFERENCE MONUMENT)
  - FOUND NAIL AND DISK



PM SURVEYING  
4546 CAMBRIDGE STREET  
WEST PALM BEACH, FL. 33415  
(561) 478-7764 FAX 478-1094  
VISIT US AT PMSURVEYING.NET  
JOB # 15060639